



شركة الاستثمار الوطنية  
NATIONAL INVESTMENTS COMPANY

## Bursa Kuwait – Daily Market Report MENA Securities – Research & Studies Dep.

05<sup>th</sup> December 2022



[www.nic.com.kw](http://www.nic.com.kw)

# DAILY MARKET COVERAGE REPORT

NIC MENA SECURITIES - RESEARCH AND STUDIES DEP



## Kuwait Market Watch

Monday, December 5, 2022

Index	Close	DTD Chg Net	DTD (%)	YTD (%)	52W High	52W Low	MKT CAP Bn (KD)	PBV (X)	PE (X)	DY (%)
All Share Index	7,560.71	-14.64	-0.19%	7.35%	8,472.15	6,861.80	45.05	2.01	26.07	3.94
Premier Index	8,449.90	-18.22	-0.22%	10.61%	9,437.37	7,459.49	35.52	2.10	21.48	4.41
Main Index	5,705.50	-5.91	-0.10%	-3.07%	6,600.62	5,190.37	9.53	1.68	43.17	2.17
NIC 50 Index	9,491.87	-19.01	-0.20%	11.37%	10,553.82	8,385.51	34.82	2.10	21.48	4.41

Index	Value Mn(KD)	Vlolume (Mn share)
All Share Index	40.65	194.61
Premier Index	26.34	68.10
Main Index	14.30	126.51
NIC 50 Index	41.33	186.35

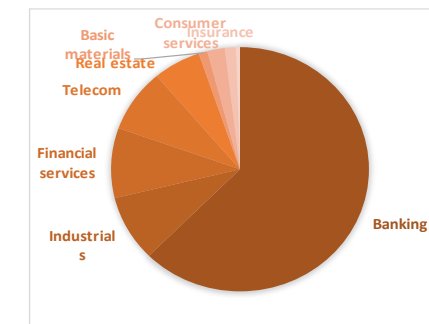
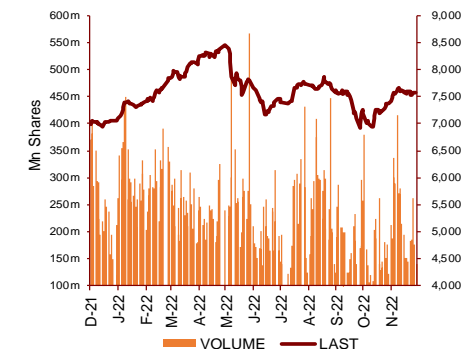
Market Breadth	UP ↑	Down ↓	No Chg ↔
All Share Index	34	67	50
Premier Index	4	15	5
Main Index	30	52	45
NIC 50 Index	17	27	6

Today's Top 5 Gainer %	Close KD	Value KD	DTD (%)
ACICO Industries	0.097	297,085	9.23%
Al Deera Holding	0.166	592.60	6.41%
Alafco Aviation Lease and Fina	0.208	1,506,490	6.12%
Mezzan Holding	0.430	1,222,029	4.62%
First Takaful Insurance	0.046	344	3.41%

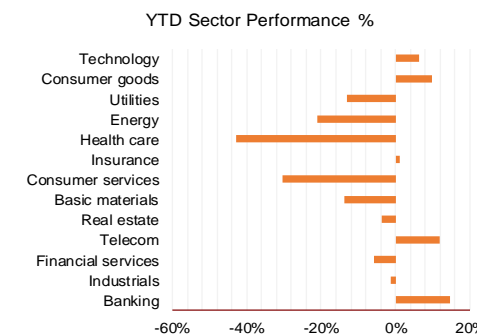
Today's Top 5 Loser %	Close KD	Value KD	DTD (%)
Ekttitab Holding	0.011	9,959	-7.08%
Future Kid Entertainment a	0.116	2,394	-5.69%
Sanam Real Estate	0.061	6	-5.00%
Kuwait Syrian Holding Co	0.035	137	-4.92%
Aayan Real Estate	0.071	464,195	-4.42%

Today's Top 5 by Value	Close KD	Trade Val Mn(KD)	DTD (%)
Kuwait Finance House	0.862	5.81	-0.12%
National Bank of Kuwait	1.115	5.70	-0.45%
Aayan Leasing and Investment	0.141	3.08	-2.08%
International Financial Adviso	0.108	2.75	-0.92%
Mobile Telecommunications	0.585	2.53	0.00%

Top 5 by Volume	Close KD	Trade Vol Mn(Shrs)	DTD (%)
International Financial Advis	0.108	25.17	-0.92%
Aayan Leasing and Investm	0.141	21.74	-2.08%
Kuwait Real Estate	0.113	15.03	0.00%
Arzan Financial Group for F	0.126	10.66	1.61%
Asiya Capital Investments	0.052	9.61	-0.39%



Sector	Close	DTD Chg Net	DTD (%)	YTD (%)	52W High	52W Low	MKT CAP Bn (KD)	PBV (X)	PE (X)	DY (%)
Banking	1,856.23	-4.590	-0.25%	14.7%	1,992.2	1,571.6	27.758	1.52	26.75	1.81
Industrials	1,131.68	3.230	0.29%	-1.1%	1,443.6	976.3	3.874	1.05	25.51	3.13
Financial services	1,333.79	-7.140	-0.53%	-5.8%	1,678.3	1,190.4	4.114	0.97	83.07	2.81
Telecom	1,215.26	-1.960	-0.16%	11.7%	1,514.7	1,066.1	3.719	1.73	13.88	2.75
Real estate	1,273.57	-2.710	-0.21%	-3.8%	1,413.0	1,155.8	2.660	0.72	30.15	1.28
Basic materials	880.74	-1.880	-0.21%	-13.9%	1,233.3	800.8	0.486	1.03	8.56	6.12
Consumer services	528.35	20.220	3.98%	-30.5%	753.3	443.8	0.977	2.16	13.24	2.10
Insurance	1,544.02	-6.300	-0.41%	1.1%	1,665.2	1,434.5	0.615	0.85	15.21	5.23
Health care	454.28	0.000	0.00%	-43.0%	821.7	420.4	0.225	38.30	13.61	1.22
Energy	1,115.06	-12.010	-1.07%	-21.1%	1,506.8	975.7	0.226	0.84	10.84	1.76
Utilities	518.42	-2.630	-0.50%	-13.2%	626.3	494.7	0.217	1.82	16.20	9.09
Consumer goods	1,479.95	10.700	0.73%	9.9%	1,641.0	1,210.0	0.160	1.07	NM	1.91
Technology	727.50	0.000	0.00%	6.4%	800.3	539.1	0.010	0.89	NM	-
	7,560.71	-14.64	-0.19%	7.3%	8,472.2	6,861.8	45.05	2.01	26.07	3.94



# DAILY MARKET COVERAGE REPORT

## NIC MENA SECURITIES - RESEARCH AND STUDIES DEP



### Premier Market

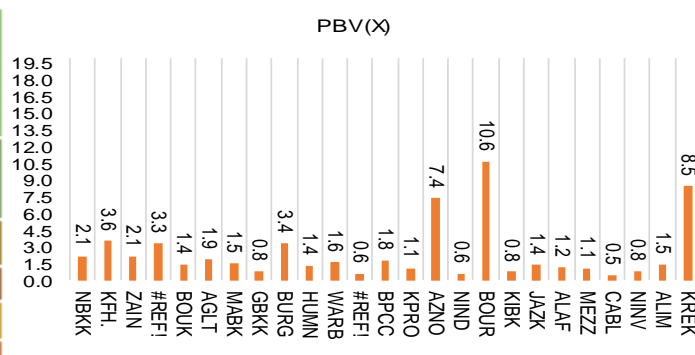
Monday, December 5, 2022

Premier Market	Price			Valuation Multiples			MKT Cap	Price Performance		Trading Indicators		ROE	ROA	52 Week (KD)		MKT Cap
	Close (KD)	Day Δ	Day % Δ	PBV(X)	PE(X)	DY%	Mn KD	MTD(%)	YTD (%)	Value (Mn KD)	(Mn Shrs)	(%)	(%)	High	Low	%
National Bank of Kuwait	1.115	-0.005	-0.45%	2.14	18.38	2.17	8,421	0%	17%	5.70	5.10	11.7%	1.5%	1.143	0.903	23.71%
Kuwait Finance House	0.862	-0.001	-0.12%	3.56	29.08	1.26	11,503	0%	14%	5.81	6.74	12.4%	1.6%	1.039	0.742	32.39%
Mobile Telecommunications	0.585	0.000	0.00%	2.10	13.46	5.64	2,531	0%	-2%	2.53	4.31	15.7%	4.3%	0.698	0.564	7.13%
Boubyan Bank	0.836	-0.002	-0.24%	3.31	54.39	0.54	3,125	-1%	17%	0.64	0.76	6.8%	0.8%	0.965	0.694	8.80%
Agility Public Warehousing	0.779	0.000	0.00%	1.44	51.35	2.14	1,988	-1%	-1%	1.16	1.49	2.3%	1.9%	1.062	0.634	5.60%
Mabane Co.	0.870	-0.007	-0.80%	1.92	18.00	1.51	1,080	-1%	16%	0.26	0.30	11.1%	5.5%	0.910	0.720	3.04%
Gulf Bank	0.336	-0.004	-1.18%	1.53	17.64	1.96	1,075	0%	26%	0.59	1.74	8.9%	0.9%	0.385	0.237	3.03%
Burgan Bank	0.230	-0.001	-0.43%	0.83	22.86	2.06	755	0%	-4%	0.04	0.19	3.8%	0.7%	0.307	0.205	2.13%
Human Soft Holding	3.375	-0.019	-0.56%	3.39	7.11	11.79	411	0%	5%	0.10	0.03	49.6%	34.9%	3.704	3.006	1.16%
Warba Bank	0.247	0.000	0.00%	1.35	24.92	0.00	494	0%	-10%	0.99	4.00	5.8%	0.6%	0.290	0.216	1.39%
Boubyan Petrochemical	0.816	-0.002	-0.24%	1.61	8.54	7.33	426	0%	-4%	0.24	0.30	20.1%	10.5%	1.125	0.769	1.20%
Kuwait Projects Company Holding	0.122	-0.002	-1.61%	0.63	NM	4.03	592	0%	-14%	1.02	8.32	-2.8%	0.0%	0.215	0.112	1.67%
Shamal Az-Zour Al-Oula Power & Water	0.197	-0.001	-0.51%	1.82	16.20	9.09	217	0%	-14%	0.09	0.48	14.8%	2.7%	0.238	0.188	0.61%
National Industries Group Holding	0.241	0.000	0.00%	1.07	12.14	4.61	518	0%	0%	0.94	3.89	5.3%	2.9%	0.314	0.207	1.46%
Boursa Kuwait Securities Co	2.311	-0.011	-0.47%	7.41	24.04	2.80	464	0%	14%	0.42	0.18	32.4%	22.9%	2.870	1.880	1.31%
Kuwait International Bank	0.200	0.001	0.50%	0.63	36.04	1.93	212	0%	-5%	0.57	2.86	1.7%	0.3%	0.259	0.186	0.60%
Jazeera Airways	1.794	0.034	1.93%	10.61	13.69	2.61	395	0%	39%	0.34	0.19	92.1%	11.6%	2.099	1.022	1.11%
Alafco Aviation Lease and Finance	0.208	0.012	6.12%	0.77	NM	0.00	198	0%	-5%	1.51	7.42	-15.9%	-3.4%	0.234	0.162	0.56%
Mezzan Holding	0.430	0.019	4.62%	1.37	NM	3.82	134	10%	-26%	1.22	2.82	-7.2%	-2.8%	0.598	0.345	0.38%
Gulf Cable and Electrical Industries	1.278	-0.022	-1.69%	1.23	12.35	4.62	267	0%	47%	0.03	0.02	10.2%	NM	1.850	0.860	0.75%
National Investments	0.260	-0.005	-1.89%	1.06	19.13	16.98	207	0%	19%	0.20	0.76	5.4%	4.4%	0.475	0.211	0.58%
Alimtiarz Investment Group	0.077	-0.001	-0.90%	0.46	NM	11.57	79	0%	-35%	0.06	0.78	-0.9%	-0.4%	0.138	0.069	0.22%
Kuwait Real Estate	0.113	0.000	0.00%	0.83	16.52	2.58	105	0%	-35%	1.70	15.03	4.9%	1.9%	0.186	0.097	0.29%
Integrated Holding	0.359	-0.002	-0.55%	1.46	23.31	2.77	91	-2%	-3%	0.11	0.30	6.4%	4.1%	0.478	0.321	0.26%
ALI ALGanim	0.830	0.000	0.00%	8.46	11.95	5.73	227	-2%	nm	0.08	0.10	30.5%	12.1%	0.966	0.750	0.64%
<b>Total</b>		<b>-18.22</b>	<b>-0.22%</b>	<b>2.10</b>	<b>21.48</b>	<b>4.41</b>	<b>35,515</b>	<b>-0.3%</b>	<b>10.6%</b>	<b>26.34</b>	<b>68.01</b>					<b>100%</b>

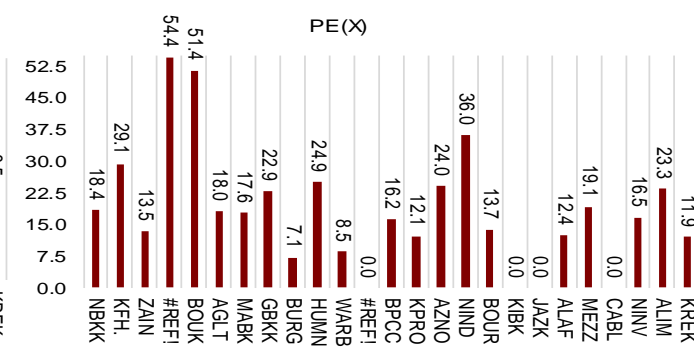
Market Capitalization



Price to Book Value

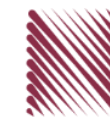


Price to Earning Value



# DAILY MARKET COVERAGE REPORT

## NIC MENA SECURITIES - RESEARCH AND STUDIES DEP



Premier Market	Price			Valuation Multiples			MKT Cap	Price Performance		ROE	ROA
Company	Close (KD)	Day Δ	Day % Δ	PBV(X)	PE(X)	DY%	Mn KD	MTD(%)	YTD (%)	(%)	(%)
National Bank of Kuwait	1.115	-0.005	-0.45%	2.14	18.4	2.17	8,421	0.0%	17.4%	11.7%	1.5%
Kuwait Finance House	0.862	-0.001	-0.12%	3.56	29.1	1.26	11,503	-0.5%	14.0%	12.4%	1.6%
Mobile Telecommunications	0.585	0.000	0.00%	2.10	13.5	5.64	2,531	0.0%	-1.7%	15.7%	4.3%
Boubyan Bank	0.836	-0.002	-0.24%	3.31	54.4	0.54	3,125	-0.9%	17.4%	6.8%	0.8%
Agility Public Warehousing	0.779	0.000	0.00%	1.44	51.4	2.14	1,988	-1.0%	-1.1%	2.3%	1.9%
Mabane Co.	0.870	-0.007	-0.80%	1.92	18.0	1.51	1,080	-1.2%	16.3%	11.1%	5.5%
Gulf Bank	0.336	-0.004	-1.18%	1.53	17.6	1.96	1,075	0.0%	26.5%	8.9%	0.9%
Burgan Bank	0.230	-0.001	-0.43%	0.83	22.9	2.06	755	0.0%	-3.8%	3.8%	0.7%
Human Soft Holding	3.375	-0.019	-0.56%	3.39	7.1	11.79	411	0.4%	4.7%	49.6%	34.9%
Warba Bank	0.247	0.000	0.00%	1.35	24.9	0.00	494	-0.4%	-9.9%	5.8%	0.6%
Boubyan Petrochemical	0.816	-0.002	-0.24%	1.61	8.5	7.33	426	-0.1%	-4.2%	20.1%	10.5%
Kuwait Projects Company Holding	0.122	-0.002	-1.61%	0.63	NM	4.03	592	0.0%	-14.1%	-2.8%	0.0%
Shamal Az-Zour Al-Oula Power & Water	0.197	-0.001	-0.51%	1.82	NM	9.09	217	0.0%	-13.6%	14.8%	2.7%
National Industries Group Holding	0.241	0.000	0.00%	1.07	12.1	4.61	518	0.0%	0.0%	5.3%	2.9%
Boursa Kuwait Securities Co	2.311	-0.011	-0.47%	7.41	24.0	2.80	464	0.0%	14.4%	32.4%	22.9%
Kuwait International Bank	0.200	0.001	0.50%	0.63	36.0	1.93	212	0.0%	-4.6%	1.7%	0.3%
Jazeera Airways	1.794	0.034	1.93%	10.61	13.7	2.61	395	-0.3%	39.1%	92.1%	11.6%
Alafco Aviation Lease and Finance	0.208	0.012	6.12%	0.77	NM	0.00	198	0.0%	-4.6%	-15.9%	-3.4%
Mezzan Holding	0.430	0.019	4.62%	1.37	NM	3.82	134	10.3%	-25.5%	-7.2%	-2.8%
Gulf Cable and Electrical Industries	1.278	-0.022	-1.69%	1.23	12.4	4.62	267	0.0%	46.7%	10.2%	8.4%
National Investments	0.260	-0.005	-1.89%	1.06	19.1	16.98	207	0.0%	18.7%	5.4%	4.4%
Alimtiq Investment Group	0.077	-0.001	-0.90%	0.46	NM	11.57	79	0.0%	-34.7%	-0.9%	-0.4%
Kuwait Real Estate	0.113	0.000	0.00%	0.83	16.5	2.58	105	0.0%	-35.0%	4.9%	1.9%
Integrated Holding	0.359	-0.002	-0.55%	1.46	23.3	2.77	91	-1.9%	-3.0%	6.4%	4.1%
ALI ALGanim	0.830	0.000	0.00%	4.16	11.9	5.73	227	-1.5%	nm	30.5%	12.1%
<b>Total</b>		<b>-18.22</b>	<b>-0.22%</b>	<b>2.10</b>	<b>21.48</b>	<b>4.41</b>	<b>35,288</b>	<b>-0.3%</b>	<b>10.6%</b>		

.bnp	Premier Market	Price	Moving Average	RSI	MKT Cap	Price Performance	52 Week (KD)					
	Discription	Close (KD)	Day Δ	Day % Δ	50 Day	200 Day	14 Day	Mn KD	MTD(%)	YTD (%)	High	Low
	Premier Index	8,450	-18.22	-0.22%	8,217	8,505	35	35,288	-0.3%	10.8%	9,437	7,459

### Top 5 Performrs (Today's Price Change)

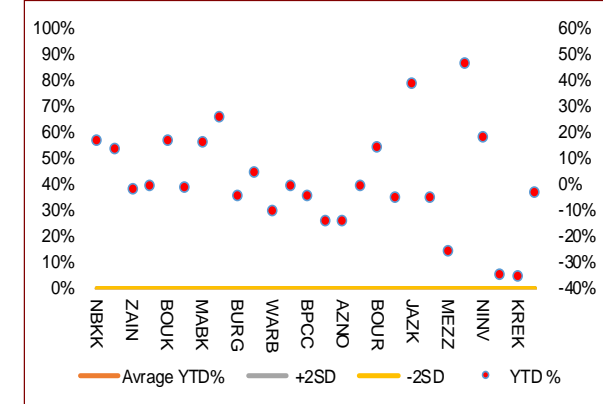
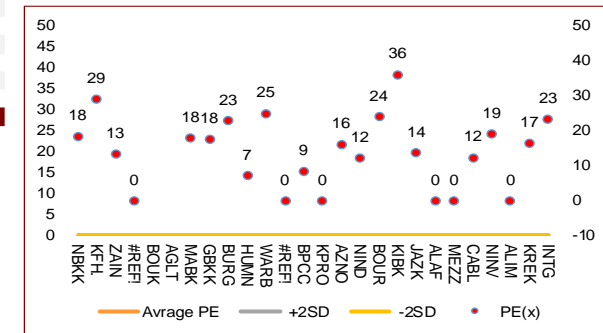
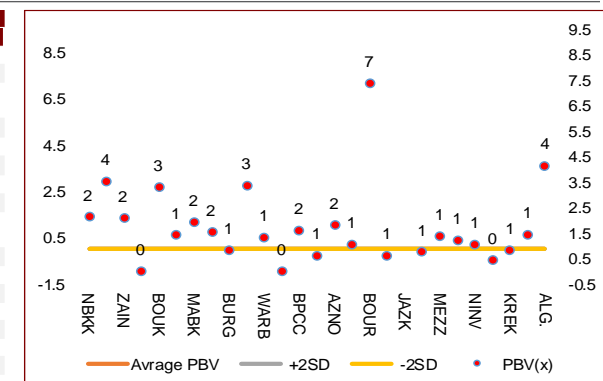
ALAF.KW	Alafco Aviation Lease and Finance	0.208	0.012	6.12%	0.175	0.198	79	198	0.0%	-4.6%	0.234	0.162
MEZZ.KW	Mezzan Holding	0.430	0.019	4.62%	0.372	0.465	76	134	10.3%	-25.5%	0.598	0.345
JAZK.KW	Jazeera Airways	1.794	0.034	1.93%	1.737	1.806	49	395	-0.3%	39.1%	2.099	1.022
KIBK.KW	Kuwait International Bank	0.200	0.001	0.50%	0.197	0.217	27	212	0.0%	-4.6%	0.259	0.186
ZAIN.KW	Mobile Telecommunications	0.585	0.000	0.00%	0.593	0.611	19	2,531	0.0%	-1.7%	0.698	0.564

### Middel Performrs (Today's Price Change)

AGLT.KW	Agility Public Warehousing	0.779	0.000	0.00%	0.746	0.851	38	1,988	-1.0%	-1.1%	1.062	0.634
WARB.KW	Warba Bank	0.247	0.000	0.00%	0.240	0.257	43	494	-0.4%	-9.9%	0.290	0.216
KREK.KW	Kuwait Real Estate	0.113	0.000	0.00%	0.107	0.137	57	105	0.0%	-35.0%	0.186	0.097
ALG.KW	ALI ALGanim	0.830	0.000	0.00%	0.810	#VALUE!	47	227	-1.5%	#VALUE!	0.966	0.750
KFH.KW	Kuwait Finance House	0.862	-0.001	-0.12%	0.830	0.879	43	11,503	-0.5%	14.0%	1.039	0.742
BOUK.KW	Boubyan Bank	0.836	-0.002	-0.24%	0.817	0.820	45	3,125	-0.9%	17.4%	0.965	0.694
BURG.KW	Burgan Bank	0.230	-0.001	-0.43%	0.222	0.250	42	755	0.0%	-3.8%	0.307	0.205
NBKK.KW	National Bank of Kuwait	1.115	-0.005	-0.45%	0.100	0.100	38	8,421	0.0%	17.4%	1.210	0.996
BOURSA.KW	Boursa Kuwait Securities Co	2.311	-0.011	-0.47%	2.241	2.405	41	464	0.0%	14.4%	2.870	1.880
INTG.KW	Integrated Holding	0.359	-0.002	-0.55%	0.354	0.396	49	91	-1.9%	-3.0%	0.478	0.321
HUMN.KW	Human Soft Holding	3.375	-0.019	-0.56%	3.352	3.342	35	411	0.4%	4.7%	3.704	3.006
MABK.KW	Mabane Co.	0.870	-0.007	-0.80%	0.873	0.830	29	1,080	-1.2%	16.3%	0.910	0.720

### Bottom 5 Performrs (Today's Price Change)

ALIMK.KW	Alimtiq Investment Group	0.077	-0.001	-0.90%	0.077	0.102	36	79	0.0%	-34.7%	0.138	0.069
GBKK.KW	Gulf Bank	0.336	-0.004	-1.18%	0.333	0.329	29	1,075	0.0%	26.5%	0.385	0.237
KPRO.KW	Kuwait Projects Company Holding	0.122	-0.002	-1.61%	0.124	0.158	25	592	0.0%	-14.1%	0.215	0.112
CABL.KW	Gulf Cable and Electrical Industries	1.278	-0.022	-1.69%	1.194	1.375	45	267	0.0%	46.7%	1.850	0.860
NINV.KW	National Investments	0.260	-0.005	-1.89%	0.251	0.316	33	207	0.0%	18.7%	0.475	0.211



# DAILY MARKET COVERAGE REPORT

## NIC MENA SECURITIES - RESEARCH AND STUDIES DEP



Banking Sector	Price			Valuation Multiples			MKT Cap	Price Performance		Trading Indicators		ROE	ROA	52 Week (KD)		MKT Cap
	Company	Close (KD)	Day Δ	Day % Δ	PBV(X)	PE(X)		DY%	Mn KD	MTD(%)	YTD (%)			Value (Mn KD)	(Mn Shrs)	
National Bank of Kuwait	1.115	-0.005	-0.45%	2.14	18.38	2.17	8,421	0.0%	17.4%	5.70	5.10	11.7%	1.5%	1.143	0.903	18.70%
Kuwait Finance House	0.862	-0.001	-0.12%	3.56	29.08	1.26	11,503	-0.5%	14.0%	5.81	6.74	12.4%	1.6%	1.039	0.742	25.54%
Boubyan Bank	0.836	-0.002	-0.24%	3.31	54.39	0.54	3,125	-0.9%	17.4%	0.64	0.76	6.8%	0.8%	0.965	0.694	6.94%
Commercial Bank of Kuwait	0.470	0.000	0.00%	1.39	16.83	4.26	931	1.1%	-6.2%	0.00	0.00	7.5%	1.3%	0.549	0.450	2.07%
Gulf Bank	0.336	-0.004	-1.18%	1.53	17.64	1.96	1,075	0.0%	26.5%	0.59	1.74	8.9%	0.9%	0.385	0.237	2.39%
Burgan Bank	0.230	-0.001	-0.43%	0.83	22.86	2.06	755	0.0%	-3.8%	0.04	0.19	3.8%	0.7%	0.307	0.205	1.68%
Ahli United Bank	0.288	0.000	0.00%	0.98	25.40	1.65	649	-0.7%	-2.1%	0.02	0.06	3.8%	0.8%	0.324	0.250	1.44%
Warba Bank	0.247	0.000	0.00%	1.35	24.92	0.00	494	-0.4%	-9.9%	0.99	4.00	5.8%	0.6%	0.290	0.216	1.10%
Al Ahli Bank of Kuwait	0.335	-0.002	-0.59%	0.99	22.01	1.41	593	0.0%	38.5%	0.28	0.83	4.5%	0.6%	0.355	0.216	1.32%
Kuwait International Bank	0.200	0.001	0.50%	0.63	36.04	1.93	212	0.0%	-4.6%	0.57	2.86	1.7%	0.3%	0.259	0.186	0.47%
<b>Total Banking Sector - 10 Companies</b>							<b>27,758</b>			<b>14.63</b>	<b>22.28</b>					<b>61.63%</b>

Basic Materials	Price			Valuation Multiples			MKT Cap	Price Performance		Trading Indicators		ROE	ROA	52 Week (KD)		MKT Cap
	Company	Close (KD)	Day Δ	Day % Δ	PBV(X)	PE(X)		DY%	Mn KD	MTD(%)	YTD (%)			Value (Mn KD)	(Mn Shrs)	
Boubyan Petrochemical	0.816	-0.002	-0.24%	1.61	8.54	7.33	426	-0.12%	-4.23%	0.24	0.30	20.1%	10.5%	1.125	0.769	0.94%
Al Kout Industrial Projects	0.390	0.000	0.00%	1.28	4.49	10.26	39	0.00%	-21.37%	0.00	0.00	31.0%	21.9%	0.545	0.390	0.09%
Kuwait Foundry	0.298	0.000	0.00%	1.23	12.64	0.00	22	0.00%	-19.24%	0.00	0.00	10.8%	10.4%	0.424	0.260	0.05%
<b>Total Basic Materials - 3 Companies</b>							<b>486</b>			<b>0.24</b>	<b>0.30</b>					<b>1.08%</b>

Consumer Goods	Price			Valuation Multiples			MKT Cap	Price Performance		Trading Indicators		ROE	ROA	52 Week (KD)		MKT Cap
	Company	Close (KD)	Day Δ	Day % Δ	PBV(X)	PE(X)		DY%	Mn KD	MTD(%)	YTD (%)			Value (Mn KD)	(Mn Shrs)	
Mezzan Holding	0.430	0.019	4.62%	1.37	NM	3.82	134	10.3%	-25.5%	1.22	2.82	-7.2%	-2.8%	0.598	0.345	0.30%
Livestock Transport and Trading	0.125	0.001	0.81%	0.77	NM	0.00	26	0.0%	-31.3%	0.00	0.00	-14.5%	-8.2%	0.183	0.112	0.06%
<b>Total Consumer Goods - 2 Companies</b>							<b>160</b>			<b>1.22</b>	<b>2.82</b>					<b>0.35%</b>

Consumer Services	Price			Valuation Multiples			MKT Cap	Price Performance		Trading Indicators		ROE	ROA	52 Week (KD)		MKT Cap
	Company	Close (KD)	Day Δ	Day % Δ	PBV(X)	PE(X)		DY%	Mn KD	MTD(%)	YTD (%)			Value (Mn KD)	(Mn Shrs)	
Jazeera Airways	1.794	0.034	1.93%	10.61	13.69	2.61	395	-0.3%	39.1%	0.34	0.19	92.1%	11.6%	2.099	1.022	0.88%
Kuwait National Cinema	1.035	0.021	2.07%	1.23	11.06	2.96	96	0.0%	17.3%	0.01	0.01	11.6%	5.3%	1.060	0.850	0.21%
Oula Fuel Marketing	0.147	-0.003	-2.00%	0.93	15.67	3.33	59	0.7%	-5.8%	0.00	0.02	5.6%	2.9%	0.168	0.140	0.13%
Al Soor Fuel Marketing	0.146	-0.001	-0.68%	0.89	18.43	3.40	59	1.4%	-5.8%	0.00	0.02	4.7%	3.5%	0.167	0.141	0.13%
Sultan Center Food Products	0.120	0.000	0.00%	0.76	NM	0.00	34	0.0%	-42.9%	0.00	0.00	-23.2%	-5.5%	0.230	0.103	0.07%
Jiyad Holding	0.023	0.000	0.88%	0.26	NM	0.00	4	0.0%	-71.5%	0.05	2.16	-16.5%	-11.4%	0.089	0.015	0.01%
IFA Hotels and Resorts	0.031	0.001	1.97%	3.05	4.73	0.00	20	0.0%	-41.9%	0.12	3.70	65.1%	2.5%	0.068	0.025	0.04%
Kuwait Resorts	0.082	-0.001	-1.08%	0.53	12.53	3.54	16	0.0%	-14.7%	0.04	0.44	4.2%	3.8%	0.104	0.067	0.04%
Future Kid Entertainment and Real Estate	0.116	-0.007	-5.69%	0.97	8.90	0.00	13	0.0%	47.4%	0.00	0.02	11.6%	5.5%	0.133	0.077	0.03%
Al Eid Food	0.240	-0.001	-0.41%	1.84	14.29	2.84	41	0.0%	4.0%	0.03	0.10	13.4%	10.2%	0.304	0.207	0.09%
Kuwait Hotels	0.170	0.000	0.00%	2.04	21.12	2.94	10	0.0%	142.9%	0.00	0.00	9.9%	6.4%	0.201	0.070	0.02%
Palms Agro Production	0.078	0.000	0.00%	0.78	NM	0.00	4	0.0%	14.4%	0.00	0.00	-9.5%	-7.6%	0.083	0.043	0.01%
ALI ALGanim	0.830	0.000	0.00%	4.16	11.95	5.73	227	-1.5%	nm	0.08	0.10	30.5%	12.1%	0.966	0.750	0.51%
<b>Total Consumer Services - 13 Companies</b>							<b>977</b>			<b>0.67</b>	<b>6.76</b>					<b>2.17%</b>

# DAILY MARKET COVERAGE REPORT

## NIC MENA SECURITIES - RESEARCH AND STUDIES DEP



Financial Services Company	Price			Valuation Multiples			MKT Cap	Price Performance		Trading Indicators		ROE	ROA	52 Week (KD)		MKT Cap
	Close (KD)	Day Δ	Day % Δ	PBV(X)	PE(X)	DY%	Mn KD	MTD(%)	YTD (%)	Value (Mn KD)	(Mn Shrs)	(%)	(%)	High	Low	%
Egypt Kuwait Holding	0.384	-0.001	-0.26%	2.17	5.79	5.55	433	0.0%	-9.4%	0.73	1.88	37.3%	17.3%	0.449	0.353	0.96%
Kuwait Projects Company Holding	0.122	-0.002	-1.61%	0.63	NM	4.03	592	0.0%	-14.1%	1.02	8.32	-2.8%	0.0%	0.215	0.112	1.31%
National Industries Group Holding	0.241	0.000	0.00%	1.07	12.14	4.61	518	0.0%	0.0%	0.94	3.89	5.3%	2.9%	0.314	0.207	1.15%
Boursa Kuwait Securities Co	2.311	-0.011	-0.47%	7.41	24.04	2.80	464	0.0%	14.4%	0.42	0.18	32.4%	22.9%	2.870	1.880	1.03%
GFH Financial Group	0.082	0.000	-0.12%	0.95	9.91	4.44	284	0.0%	-17.0%	0.51	6.30	9.4%	1.2%	0.109	0.073	0.63%
National Investments	0.260	-0.005	-1.89%	1.06	19.13	16.98	207	0.0%	18.7%	0.20	0.76	5.4%	4.4%	0.475	0.211	0.46%
Tamdeen Investment	0.624	0.000	0.00%	0.67	16.34	1.60	209	0.0%	64.6%	0.00	0.00	4.4%	3.5%	0.625	0.309	0.46%
Alimtiq Investment Group	0.077	-0.001	-0.90%	0.46	NM	11.57	79	0.0%	-34.7%	0.06	0.78	-0.9%	-0.4%	0.138	0.069	0.18%
Commercial Facilities	0.177	0.000	0.00%	0.57	8.75	8.47	90	0.0%	-14.1%	0.01	0.04	6.5%	3.6%	0.228	0.165	0.20%
Aayan Leasing and Investment	0.141	-0.003	-2.08%	1.05	13.35	0.00	94	0.0%	-14.8%	3.08	21.74	8.2%	6.0%	0.204	0.104	0.21%
Kuwait Investment	0.136	-0.001	-0.73%	0.67	28.33	18.25	75	0.0%	-51.6%	0.03	0.21	2.2%	2.1%	0.300	0.113	0.17%
Noor Financial Investment	0.199	0.000	0.00%	1.25	5.62	2.41	101	2.1%	-21.8%	0.00	0.02	22.0%	16.2%	0.295	0.163	0.22%
Arzan Financial Group for Financing and Investmei	0.126	0.002	1.61%	0.88	9.27	1.95	101	0.0%	-19.0%	1.33	10.66	9.4%	7.0%	0.180	0.109	0.22%
Kuwait Financial Centre	0.114	0.001	0.88%	0.56	33.14	8.43	57	0.0%	-33.9%	0.01	0.08	1.7%	1.7%	0.187	0.101	0.13%
Gulf Investment House	0.416	0.007	1.71%	3.97	1,664.00	0.00	169	0.0%	38.7%	0.34	0.83	0.2%	0.6%	0.422	0.217	0.38%
Arabi Group Holdings	0.271	-0.004	-1.45%	1.60	NM	0.00	46	0.0%	-6.9%	0.03	0.12	-22.8%	-3.1%	0.499	0.197	0.10%
Kuwait and Middle East Financial Investment	0.094	-0.003	-2.79%	0.81	12.66	7.23	21	0.0%	-37.3%	0.00	0.01	6.4%	3.1%	0.175	0.091	0.05%
Privatization Holding	0.037	0.000	-0.82%	0.31	NM	0.00	22	-0.3%	-33.4%	0.00	0.01	-6.7%	-5.5%	0.063	0.032	0.05%
Asiya Capital Investments	0.052	0.000	-0.39%	0.47	3.27	0.00	40	0.0%	-1.0%	0.49	9.61	15.5%	15.2%	0.071	0.037	0.09%
Umm Al Qaiwain General Investment Co	0.096	0.000	0.00%	0.59	6.38	5.20	35	0.0%	10.4%	0.00	0.00	9.8%	8.1%	0.108	0.086	0.08%
Securities House	0.070	-0.001	-1.83%	0.72	12.87	0.00	30	0.0%	-29.2%	0.03	0.48	5.5%	4.7%	0.105	0.052	0.07%
Kamco Investment	0.106	-0.002	-1.85%	0.59	6.12	9.26	36	0.0%	-17.8%	0.01	0.05	9.8%	4.6%	0.167	0.089	0.08%
First Investment	0.073	0.001	0.69%	0.66	83.30	0.00	33	0.0%	-12.9%	0.09	1.19	0.8%	0.8%	0.104	0.068	0.07%
Inovest BSC Public	0.097	0.000	-0.31%	0.00	NM	0.00	29	0.0%	-18.0%	0.01	0.09	2.9%	1.8%	0.189	0.070	0.06%
Coast Investment and Development	0.080	-0.002	-2.68%	0.82	25.08	6.08	37	0.0%	-23.8%	0.00	0.01	3.2%	3.1%	0.125	0.066	0.08%
Al Madar Investment	0.108	0.000	0.00%	1.02	54.55	0.00	22	0.0%	-9.2%	0.00	0.00	1.9%	1.9%	0.120	0.083	0.05%
Bayan Investment	0.041	0.000	0.00%	0.31	NM	0.00	13	0.0%	-28.7%	0.00	0.00	-2.4%	-1.5%	0.063	0.036	0.03%
Al Manar Financing and Leasing	0.060	-0.003	-4.03%	0.57	12.58	0.00	16	0.0%	-4.5%	0.00	0.01	4.3%	3.6%	0.079	0.049	0.03%
Manazel Holding	0.031	0.000	0.33%	0.69	9.53	0.00	13	0.0%	-40.4%	0.07	2.18	7.0%	2.2%	0.059	0.025	0.03%
Kuwait Finance and Investment	0.064	0.000	0.00%	0.49	NM	0.00	20	0.0%	-26.4%	0.00	0.00	-1.6%	-1.1%	0.097	0.055	0.05%
National International Holding	0.114	-0.002	-1.72%	0.69	15.66	4.18	25	0.0%	-22.8%	0.04	0.35	4.1%	2.8%	0.167	0.091	0.06%
Osoul Investment	0.088	0.000	0.00%	0.78	NM	12.03	11	0.0%	7.7%	0.00	0.00	-2.0%	-1.8%	0.118	0.062	0.02%
UniCap Investment and Finance	0.071	-0.001	-0.98%	0.80	83.29	0.00	16	11.7%	3.4%	0.02	0.35	1.9%	0.2%	0.079	0.050	0.04%
Amar Finance and Leasing	0.063	0.000	0.00%	0.58	3.41	0.00	12	0.0%	-4.0%	0.00	0.00	18.6%	17.3%	0.080	0.058	0.03%
Gulf North Africa Holding	0.169	-0.001	-0.59%	1.72	59.40	0.00	20	0.0%	96.3%	0.18	1.09	3.0%	2.4%	0.141	0.057	0.04%
International Financial Advisors	0.108	-0.001	-0.92%	0.69	8.96	0.00	27	0.0%	-4.4%	2.75	25.17	8.2%	3.4%	0.127	0.082	0.06%
Credit Rating and Collection	0.021	0.000	0.00%	0.73	NM	0.00	3	0.0%	-47.8%	0.00	0.00	-0.5%	-0.4%	0.051	0.014	0.01%
Ekttitab Holding	0.011	-0.001	-7.08%	0.35	NM	0.00	3	0.0%	-50.7%	0.01	0.95	-17.2%	-13.2%	0.021	0.009	0.01%
Kuwait Syrian Holding Co	0.035	-0.002	-4.92%	0.33	5.51	0.00	6	0.0%	-18.7%	0.00	0.00	8.6%	6.2%	0.057	0.026	0.01%
Warba Capital Holding	0.093	-0.001	-0.53%	1.03	NM	0.00	9	-0.3%	8.1%	0.01	0.11	-0.8%	-0.7%	0.108	0.070	0.02%
National Consumer Holding	0.118	-0.002	-1.67%	1.28	NM	0.00	35	-2.5%	-1.6%	0.17	1.46	-2.3%	-2.3%	0.158	0.097	0.08%
Al Deera Holding	0.166	0.010	6.41%	1.20	10.94	0.00	15	0.0%	-17.0%	0.00	0.00	9.0%	4.8%	0.200	0.143	0.03%
AL Safat Investment	0.122	-0.002	-1.61%	1.59	NM	0.00	34	-0.8%	0.1%	0.23	1.88	-2.8%	-2.1%	0.270	0.091	0.08%
Gulf Franchising Holding	0.100	0.001	0.60%	1.27	3.76	0.00	4	0.0%	4.4%	0.00	0.00	40.5%	13.1%	0.148	0.063	0.01%
<b>Total Financial Services - 44 Companies</b>							<b>4,109</b>			<b>12.83</b>	<b>100.81</b>					<b>9.12%</b>

# DAILY MARKET COVERAGE REPORT

## NIC MENA SECURITIES - RESEARCH AND STUDIES DEP

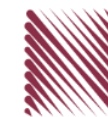


Health Care	Price			Valuation Multiples			MKT Cap	Price Performance		Trading Indicators		ROE	ROA	52 Week (KD)		MKT Cap
	Company	Close (KD)	Day Δ	Day % Δ	PBV(X)	PE(X)		DY%	Mn KD	MTD(%)	YTD (%)			Value (Mn KD)	(Mn Shrs)	
Al-Maidan Clinic for Oral Health Services	0.694	0.000	0.00%	2.64	16.14	0.00	156	0.0%	-49.6%	0.00	0.00	17.7%	11.4%	1.400	0.556	0.35%
Advanced Technology	0.409	0.000	0.00%	0.91	11.08	3.67	61	0.0%	-21.0%	0.00	0.00	8.4%	1.7%	0.595	0.409	0.14%
Yiaco Medical	4.853	0.000	0.00%	111.34	NM	0.00	8	0.0%	2.7%	0.00	0.00	-178.5%	-3.6%	5.177	4.303	0.02%
<b>Total Health Care - 3 Companies</b>							<b>225</b>			<b>0.00</b>	<b>0.00</b>					<b>0.50%</b>

Industrials	Price			Valuation Multiples			MKT Cap	Price Performance		Trading Indicators		ROE	ROA	52 Week (KD)		MKT Cap
	Company	Close (KD)	Day Δ	Day % Δ	PBV(X)	PE(X)		DY%	Mn KD	MTD(%)	YTD (%)			Value (Mn KD)	(Mn Shrs)	
Agility Public Warehousing	0.779	0.000	0.00%	1.44	51.35	2.14	1,988	-1.0%	-1.1%	1.16	1.49	2.3%	1.9%	1.062	0.634	4.41%
Human Soft Holding	3.375	-0.019	-0.56%	3.39	7.11	11.79	411	0.4%	4.7%	0.10	0.03	49.6%	34.9%	3.704	3.006	0.91%
Alafco Aviation Lease and Finance	0.208	0.012	6.12%	0.77	NM	0.00	198	0.0%	-4.6%	1.51	7.42	-15.9%	-3.4%	0.234	0.162	0.44%
Kuwait Cement	0.226	0.000	0.00%	0.84	160.28	2.21	161	-1.7%	-2.2%	0.00	0.02	0.5%	0.3%	0.295	0.194	0.36%
Gulf Cable and Electrical Industries	1.278	-0.022	-1.69%	1.23	12.35	4.62	267	0.0%	46.7%	0.03	0.02	10.2%	8.4%	1.850	0.860	0.59%
Integrated Holding	0.359	-0.002	-0.55%	1.46	23.31	2.77	91	-1.9%	-3.0%	0.11	0.30	6.4%	4.1%	0.478	0.321	0.20%
Kuwait Portland Cement	0.858	-0.004	-0.46%	1.18	17.71	8.12	86	0.0%	-12.4%	0.00	0.00	6.6%	4.8%	1.240	0.751	0.19%
Educational Holding Group	2.585	0.085	3.40%	4.00	9.14	0.00	54	0.0%	-35.4%	0.00	0.00	30.4%	18.3%	4.431	2.300	0.12%
United Projects for Aviation Services	0.195	0.000	0.00%	0.71	42.12	0.00	74	-3.9%	-21.4%	0.00	0.00	1.7%	1.0%	0.290	0.182	0.16%
Heavy Engineering Industries and Shipbuilding	0.686	0.003	0.44%	1.81	22.72	2.93	124	0.0%	34.8%	0.12	0.18	8.1%	3.2%	0.960	0.500	0.27%
National Industries	0.196	0.000	0.00%	0.80	12.36	5.10	69	0.0%	1.6%	0.00	0.00	6.5%	4.7%	0.260	0.172	0.15%
ACICO Industries	0.097	0.008	9.23%	0.49	NM	0.00	32	10.3%	-30.2%	0.30	3.10	-15.4%	-3.0%	0.208	0.076	0.07%
Kuwait Company for Process Plant Construction a	0.306	0.004	1.32%	1.19	17.18	8.20	36	0.0%	-35.5%	0.00	0.01	6.9%	4.1%	0.513	0.286	0.08%
Ras Al Khaimah for White Cement and Constructi	0.139	0.000	0.00%	1.15	31.74	5.97	70	0.0%	10.3%	0.00	0.00	3.6%	3.0%	0.175	0.113	0.15%
Combined Group Contracting	0.449	0.012	2.75%	1.59	8.56	5.72	77	0.0%	26.8%	0.23	0.52	19.6%	4.8%	0.500	0.338	0.17%
Kuwait and Gulf Link Transport	0.065	-0.002	-2.40%	0.38	2.23	0.00	18	0.0%	-4.7%	0.00	0.07	18.8%	4.3%	0.089	0.054	0.04%
Shuaiba Industrial	0.153	0.001	0.66%	0.82	11.72	7.89	15	0.0%	-32.0%	0.00	0.02	7.0%	5.7%	0.310	0.137	0.03%
National Cleaning	0.038	0.000	-0.53%	0.30	NM	0.00	9	-1.1%	-34.1%	0.00	0.01	-12.6%	-3.7%	0.063	0.031	0.02%
Mubarrad Holding	0.082	0.001	0.86%	0.63	8.68	6.13	13	0.0%	-25.3%	0.10	1.23	7.3%	6.5%	0.120	0.071	0.03%
Specialities Group Holding	0.111	0.002	1.83%	0.58	6.63	6.23	18	0.0%	-10.7%	0.04	0.37	8.8%	6.0%	0.152	0.076	0.04%
Salbookh Trading	0.016	-0.001	-2.96%	0.54	NM	0.00	2	1.2%	-62.2%	0.00	0.12	-52.7%	-28.8%	0.047	0.014	0.00%
Metal and Recycling	0.072	-0.001	-1.92%	0.92	NM	0.00	6	-10.5%	-24.6%	0.02	0.28	-5.7%	0.0%	0.104	0.060	0.01%
Equipment Holding	0.052	0.000	0.00%	0.85	NM	0.00	4	0.0%	-5.1%	0.00	0.00	-8.7%	-2.4%	0.067	0.030	0.01%
Jassim Transport & Stevedoring	0.347	0.000	0.00%	1.15	13.88	4.61	52	0.6%	-14.7%	0.01	0.12	8.6%	6.7%	0.410	0.300	0.12%
<b>Total Industrials - 23 Companies</b>							<b>3,874</b>			<b>3.75</b>	<b>15.30</b>					<b>8.60%</b>

# DAILY MARKET COVERAGE REPORT

## NIC MENA SECURITIES - RESEARCH AND STUDIES DEP



Insurance		Price			Valuation Multiples			MKT Cap	Price Performance		Trading Indicators		ROE	ROA	52 Week (KD)		MKT Cap
Company	Close (KD)	Day Δ	Day % Δ	PBV(X)	PE(X)	DY%	Mn KD	MTD(%)	YTD (%)	Value (Mn KD)	(Mn Shrs)	(%)	(%)	High	Low	%	
Gulf Insurance Group	1.000	0.000	0.00%	1.03	9.94	10.60	284	0.0%	-6.5%	0.00	0.00	11.7%	2.5%	1.088	0.943	0.63%	
Al Ahleia Insurance	0.500	0.005	1.01%	0.82	6.66	7.07	108	0.0%	-1.0%	0.02	0.05	12.5%	4.5%	0.612	0.453	0.24%	
Kuwait Insurance	0.538	-0.018	-3.24%	0.81	8.01	5.94	99	0.0%	39.0%	0.10	0.18	10.3%	6.2%	0.627	0.379	0.22%	
Kuwait Reinsurance	0.283	0.000	0.00%	1.00	9.27	1.62	67	0.0%	12.2%	0.00	0.00	11.3%	3.6%	0.373	0.217	0.15%	
Bahrain Kuwait Insurance	0.191	0.000	0.00%	1.31	11.89	8.44	29	0.0%	0.0%	0.00	0.00	10.9%	2.2%	0.191	0.191	0.06%	
Warba Insurance and Reinsurance	0.120	-0.002	-1.64%	0.55	12.37	8.20	20	-2.4%	-24.5%	0.00	0.00	4.3%	1.5%	0.165	0.117	0.05%	
First Takaful Insurance	0.046	0.002	3.41%	0.60	48.92	0.00	5	0.0%	-9.0%	0.00	0.01	1.2%	0.8%	0.062	0.034	0.01%	
Wethaq Takaful Insurance	0.025	-0.001	-3.10%	0.67	14.62	0.00	3	0.0%	-50.9%	0.01	0.47	2.3%	2.3%	0.060	0.024	0.01%	
<b>Total Insurance - 8 Companies</b>							<b>615</b>			<b>0.13</b>	<b>0.71</b>					<b>1.37%</b>	

Energy		Price			Valuation Multipels			MKT Cap	Price Performance		Trading Indicators		ROE	ROA	52 Week (KD)		MKT Cap
Company	Close (KD)	Day Δ	Day % Δ	PBV(X)	PE(X)	DY%	Mn KD	MTD(%)	YTD (%)	Value (Mn KD)	(Mn Shrs)	(%)	(%)	High	Low	%	
National Petroleum Services	0.780	-0.019	-2.38%	1.85	10.89	4.38	76	6.8%	-4.9%	0.04	0.05	17.8%	14.3%	0.860	0.625	0.17%	
Independent Petroleum Group	0.485	0.000	0.00%	0.85	12.25	6.19	88	0.0%	-17.5%	0.00	0.00	7.1%	1.5%	0.600	0.368	0.19%	
Burgan for Well Drilling Trading and Maintenance	0.116	-0.002	-1.69%	0.42	9.39	0.00	30	0.0%	-13.2%	0.00	0.03	4.5%	1.5%	0.161	0.094	0.07%	
Energy House Holding	0.021	0.000	0.00%	0.78	NM	0.00	16	0.0%	-66.1%	0.00	0.00	-0.9%	-2.2%	0.080	0.019	0.04%	
Gulf Petroleum Investment	0.015	0.000	-1.29%	0.22	NM	0.00	7	0.0%	-37.6%	0.00	0.24	-4.3%	-2.8%	0.027	0.013	0.02%	
Senergy Holding	0.046	0.000	0.22%	0.92	NM	0.00	9	-0.9%	-7.1%	0.00	0.00	-1.2%	-0.6%	0.054	0.035	0.02%	
<b>Total Energy - 6 Companies</b>							<b>226</b>			<b>0.05</b>	<b>0.33</b>					<b>0.50%</b>	



# DAILY MARKET COVERAGE REPORT

## NIC MENA SECURITIES - RESEARCH AND STUDIES DEP



Real Estate	Price		Valuation Multiples					MKT Cap	Performance		Trading Indicators		ROE	ROA	2 Week (KD)		MKT Cap
Company	Close (KD)	Day Δ	Day % Δ	PBV(X)	PE(X)	DY%	Mn KD	MTD(%)	YTD (%)	Value (Mn KD)	(Mn Shrs)	(%)	(%)	High	Low	%	
Mabane Co.	0.870	-0.007	-0.80%	1.92	18.00	1.51	1,080	-1.2%	16.3%	0.26	0.30	11.1%	5.5%	0.910	0.720	2.40%	
Salhia Real Estate	0.528	0.003	0.57%	1.69	17.38	2.72	272	0.0%	4.8%	0.28	0.53	9.9%	4.0%	0.539	0.428	0.60%	
Commercial Real Estate	0.099	0.000	-0.30%	0.60	20.08	5.04	174	0.0%	-20.8%	0.34	3.42	3.0%	1.7%	0.132	0.094	0.39%	
National Real Estate	0.153	0.004	2.68%	0.90	NM	0.00	284	2.0%	-16.9%	0.61	4.02	-3.5%	-2.4%	0.212	0.125	0.63%	
Tamdeen Real Estate	0.384	0.000	0.00%	0.71	9.16	2.60	154	0.0%	13.3%	0.00	0.00	8.2%	3.6%	0.390	0.296	0.34%	
Kuwait Real Estate	0.113	0.000	0.00%	0.83	16.52	2.58	105	0.0%	-35.0%	1.70	15.03	4.9%	1.9%	0.186	0.097	0.23%	
United Real Estate	0.074	-0.002	-2.88%	0.46	107.39	0.00	80	0.0%	-1.7%	0.00	0.00	0.4%	-0.1%	0.121	0.064	0.18%	
First Dubai for Real Estate Development	0.054	-0.001	-1.09%	0.51	25.09	0.00	40	0.0%	-48.4%	0.02	0.39	2.1%	1.7%	0.114	0.044	0.09%	
Al Mazaya Holding	0.051	0.000	-0.39%	0.51	38.50	0.00	32	-2.1%	-33.1%	0.08	1.49	1.3%	0.7%	0.080	0.043	0.07%	
Ajial Real Estate Entertainment	0.295	0.000	0.00%	0.43	19.42	1.69	57	0.0%	-3.0%	0.00	0.00	2.2%	1.8%	0.344	0.268	0.13%	
Injazzat Real Estate Development	0.080	0.000	0.13%	0.47	6.39	6.26	27	0.0%	-20.0%	0.00	0.05	7.5%	3.9%	0.114	0.070	0.06%	
Munshaat Real Estate Projects	0.062	0.000	0.00%	1.86	5.13	0.00	20	0.0%	-13.4%	0.00	0.00	42.9%	4.5%	0.076	0.051	0.04%	
Aayan Real Estate	0.071	-0.003	-4.42%	0.50	23.26	0.00	30	0.0%	-19.3%	0.46	6.38	2.2%	2.3%	0.093	0.056	0.07%	
Al Argan International Real Estate	0.094	0.001	1.08%	0.31	11.71	0.00	24	0.0%	-19.7%	0.00	0.02	2.6%	0.9%	0.144	0.073	0.05%	
Al-Enmaa Real Estate	0.059	0.001	2.06%	0.65	NM	0.00	27	0.0%	-20.3%	0.01	0.15	-5.9%	NM	0.081	0.050	0.06%	
Arkan Al Kuwait Real Estate	0.122	0.000	0.00%	0.86	11.89	4.92	31	0.0%	-1.6%	0.01	0.05	7.4%	2.3%	0.146	0.113	0.07%	
Kuwait Business Town Real Estate	0.062	-0.001	-2.07%	0.76	12.68	0.00	35	0.0%	-24.4%	0.13	2.11	5.0%	3.4%	0.092	0.046	0.08%	
Dalqan Real Estate	0.233	-0.004	-1.69%	2.07	202.61	0.00	14	0.0%	7.4%	0.04	0.17	1.0%	1.0%	0.249	0.195	0.03%	
Sokouk Holding	0.025	0.001	2.50%	0.56	15.28	0.00	14	-0.4%	-24.5%	0.00	0.04	3.8%	1.7%	0.035	0.020	0.03%	
Tijara and Realestate Investment	0.057	0.000	0.18%	0.51	8.62	5.30	21	0.2%	-7.2%	0.01	0.09	6.0%	3.3%	0.089	0.044	0.05%	
Al-Arabiya Real Estate	0.034	-0.001	-2.86%	0.41	NM	0.00	17	0.0%	-18.9%	0.13	3.76	-22.5%	-7.2%	0.045	0.026	0.04%	
Aqar Real Estate Investments	0.062	-0.002	-3.45%	0.51	18.09	5.23	14	0.0%	-22.0%	0.00	0.01	2.9%	2.4%	0.085	0.052	0.03%	
Mashaer Holding	0.056	0.000	-0.53%	0.66	NM	0.00	10	0.0%	-19.7%	0.08	1.43	-3.6%	-1.2%	0.075	0.049	0.02%	
Dar Al Thuraya Real Estate	0.225	0.000	0.00%	1.93	30.24	0.00	33	0.0%	114.3%	0.00	0.00	6.6%	5.6%	0.225	0.099	0.07%	
Osos Holding Group	0.105	0.000	0.00%	0.93	9.15	9.52	11	0.0%	0.0%	0.00	0.00	10.2%	6.5%	0.147	0.094	0.02%	
Al Massaleh Real Estate	0.031	0.000	0.00%	0.51	NM	0.00	7	-0.3%	-41.5%	0.00	0.00	-12.3%	-2.2%	0.053	0.030	0.02%	
Kuwait Remal Real Estate	0.008	0.000	0.00%	1.09	NM	0.00	2	0.0%	-58.6%	0.00	0.00	-114.8%	-12.4%	0.020	0.007	0.01%	
Kuwait Real Estate Holding	0.035	0.000	0.00%	0.65	12.64	0.00	7	0.0%	-33.9%	0.00	0.00	5.1%	1.7%	0.057	0.031	0.01%	
Taameer Real Estate Investment	0.024	0.000	0.00%	0.38	NM	0.00	5	6.7%	-41.9%	0.00	0.00	-13.8%	-12.7%	0.046	0.018	0.01%	
Sanam Real Estate	0.061	-0.003	-5.00%	0.80	68.31	0.00	7	0.0%	-22.9%	0.00	0.00	1.2%	1.0%	0.100	0.053	0.02%	
Mena Real Estate	0.028	0.000	0.00%	0.32	NM	0.00	4	0.0%	-43.4%	0.00	0.00	-6.8%	-5.4%	0.059	0.028	0.01%	
Al Masaken International Real Estate Developmen	0.028	0.000	0.00%	0.48	NM	0.00	3	0.0%	-35.8%	0.00	0.00	-0.5%	-0.2%	0.051	0.026	0.01%	
Real Estate Trade Centers	0.060	0.001	1.35%	0.33	16.13	0.00	8	0.0%	-14.3%	0.00	0.02	2.1%	1.7%	0.105	0.043	0.02%	
Land United Real Estate	0.068	0.000	0.00%	0.60	NM	0.00	10	0.0%	-27.6%	0.00	0.00	-4.4%	-1.4%	0.103	0.052	0.02%	
<b>Total Real Estate - 34 Companies</b>							<b>2,660</b>			<b>4.17</b>	<b>39.46</b>					<b>5.90%</b>	

# DAILY MARKET COVERAGE REPORT

NIC MENA SECURITIES - RESEARCH AND STUDIES DEP



Technology	Price			Valuation Multiples			MKT Cap	Price Performance		Trading Indicators		ROE	ROA	52 Week (KD)		MKT Cap
	Close (KD)	Day Δ	Day % Δ	PBV(X)	PE(X)	DY%	Mn KD	MTD(%)	YTD (%)	Value (Mn KD)	(Mn Shrs)	(%)	(%)	High	Low	%
Automated Systems	0.100	0.000	0.00%	0.89	NM	0.00	10	0.0%	6.4%	0.06	0.56	-3.2%	-2.8%	0.110	0.074	0.02%
<b>Total Technology - 1 Companies</b>				<b>0.89</b>	<b>NM</b>	<b>0.0%</b>	<b>10</b>			<b>0.06</b>	<b>0.56</b>	<b>-3.21%</b>	<b>-2.82%</b>			<b>0.02%</b>

Telecom	Price			Valuation Multiples			MKT Cap	Price Performance		Trading Indicators		ROE	ROA	52 Week (KD)		MKT Cap
	Close (KD)	Day Δ	Day % Δ	PBV(X)	PE(X)	DY%	Mn KD	MTD(%)	YTD (%)	Value (Mn KD)	(Mn Shrs)	(%)	(%)	High	Low	%
Mobile Telecommunications	0.585	0.000	0.00%	2.10	13.46	5.64	2,531	0.0%	-1.7%	2.53	4.31	15.7%	4.3%	0.698	0.564	5.62%
Kuwait Telecommunications	0.573	-0.001	-0.17%	2.47	12.62	5.23	572	-0.5%	34.0%	0.13	0.22	20.3%	11.1%	1.189	0.418	1.27%
National Mobile Telecommunications	1.200	-0.010	-0.83%	1.13	15.57	2.89	601	2.6%	92.3%	0.03	0.03	7.2%	4.2%	1.280	0.615	1.34%
AAN Digital Services	0.016	0.000	0.00%	2.48	NM	0.00	14	0.0%	-2.4%	0.00	0.00	-99.6%	NM	0.019	0.016	0.03%
Hayat Communications	0.058	0.000	0.00%	0.46	NM	0.00	5	0.0%	-45.3%	0.00	0.00	-1.2%	-0.5%	0.110	0.050	0.01%
<b>Telecom - 5 Companies</b>							<b>3,724</b>			<b>2.69</b>	<b>4.56</b>					<b>8.27%</b>

Utilities	Price			Valuation Multiples			MKT Cap	Price Performance		Trading Indicators		ROE	ROA	52 Week (KD)		MKT Cap
	Close (KD)	Day Δ	Day % Δ	PBV(X)	PE(X)	DY%	Mn KD	MTD(%)	YTD (%)	Value (Mn KD)	(Mn Shrs)	(%)	(%)	High	Low	%
Shamal Az-Zour Al-Oula Power & Water	0.197	-0.001	-0.51%	1.82	16.20	9.09	217	0.0%	-13.6%	0.09	0.48	14.8%	2.7%	0.238	0.188	0.48%
<b>Total Utilities - 1 Companies</b>							<b>217</b>			<b>0.09</b>	<b>0.48</b>					<b>0.48%</b>

<b>Total Market 154 Companies</b>				<b>2.01</b>	<b>26.07</b>	<b>3.94</b>	<b>45,041</b>			<b>40.65</b>	<b>194.61</b>					<b>100%</b>
-----------------------------------	--	--	--	-------------	--------------	-------------	---------------	--	--	--------------	---------------	--	--	--	--	-------------

## End of Report

The information contained in this document is proprietary to NIC and is for use only by the persons to whom it is issued. This document is confidential and may not be distributed either in part or in whole without the express agreement of NIC. It is intended solely for the use of the individual or entity to whom it is addressed and others authorized to receive it.

Note : ROE and ROA is calculated based on LFY net profit & shareholders' equity and LFY Operating Profits & Total Assets

Sources : National Investments Company Research and Studies Departments, Boursa, Refinitiv.



شركة الاستثمار الوطنية  
NATIONAL INVESTMENTS COMPANY

Sharq, Al Mutanabi Street, Khaleejia Tower | P.O. Box 25667, Safat 13117, Kuwait

T.: +965 2226 6666 | Fax: +965 2226 6793 | [www.nic.com.kw](http://www.nic.com.kw)